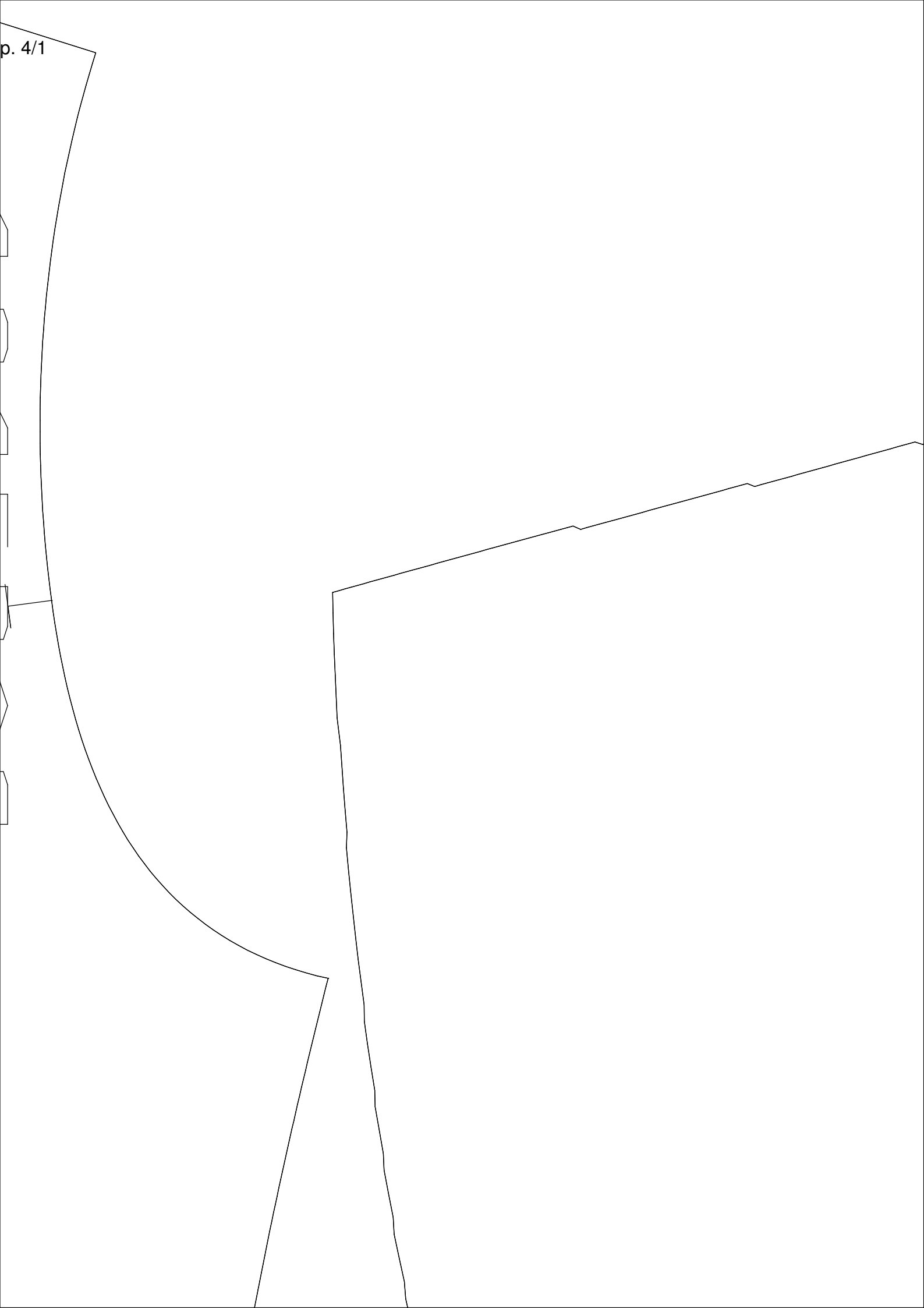


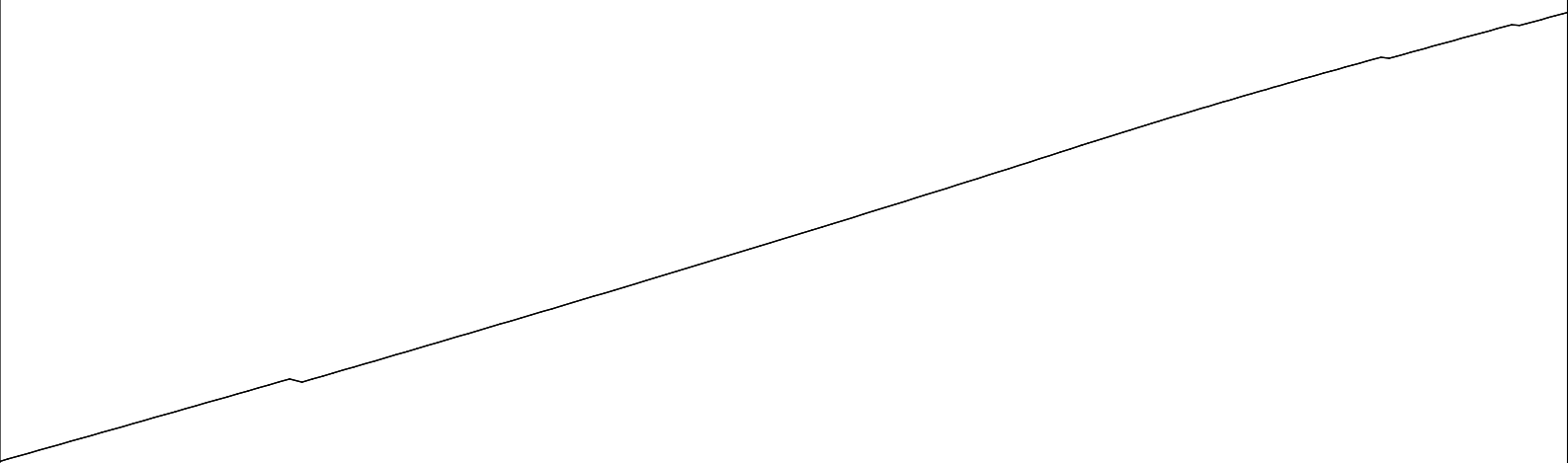
БЕРХНЯЯ ЧАСТЬ ПОЛОЧКИ
и ПОЛОТНАВЕРХ, Кн. дет. = (1, 1)
к = 168-84-66-90

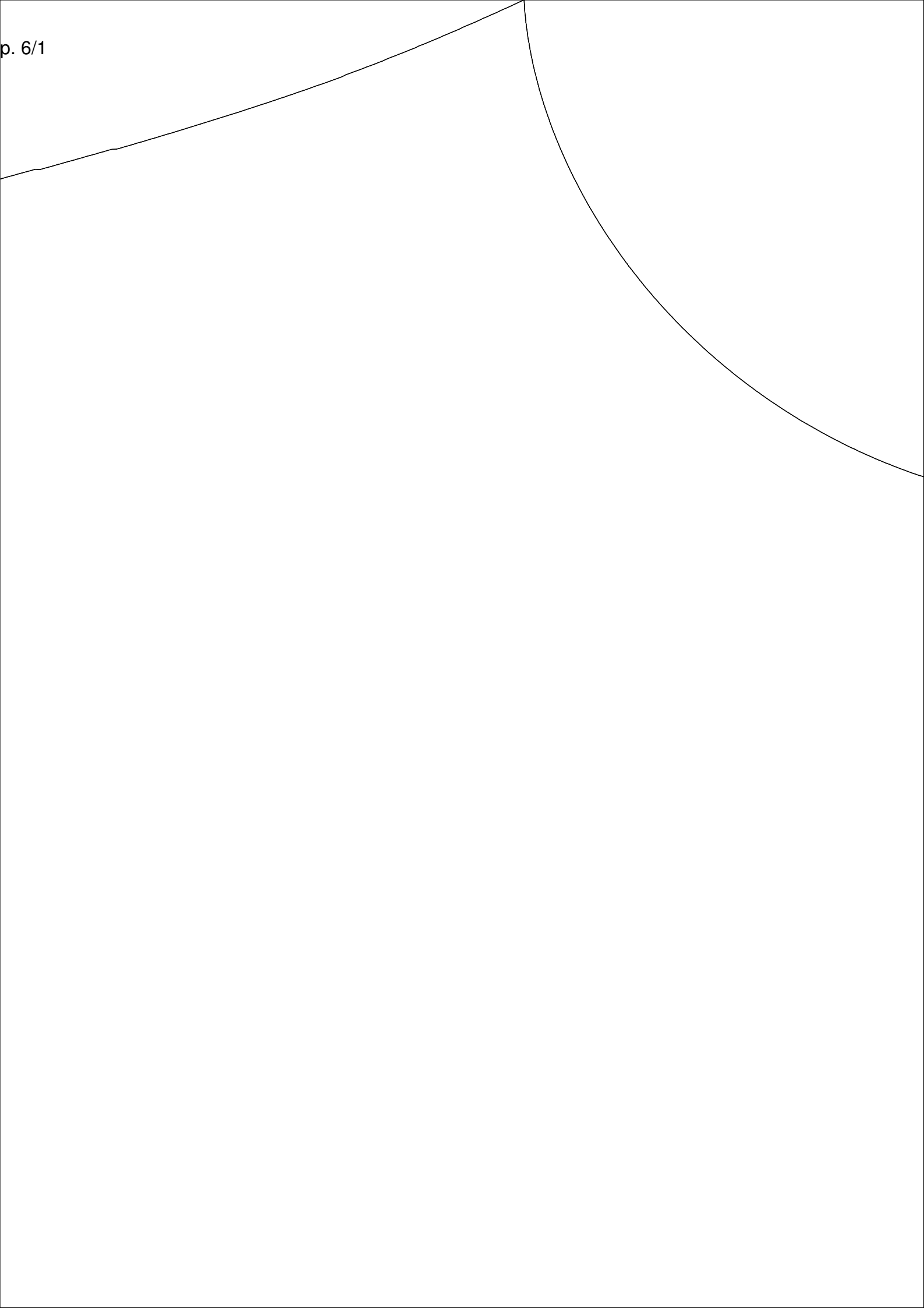
ВЕРХНЯЯ ЧАСТЬ СПИ
Тип Полотна ВЕРХ, к
Ж=168-84-66-90

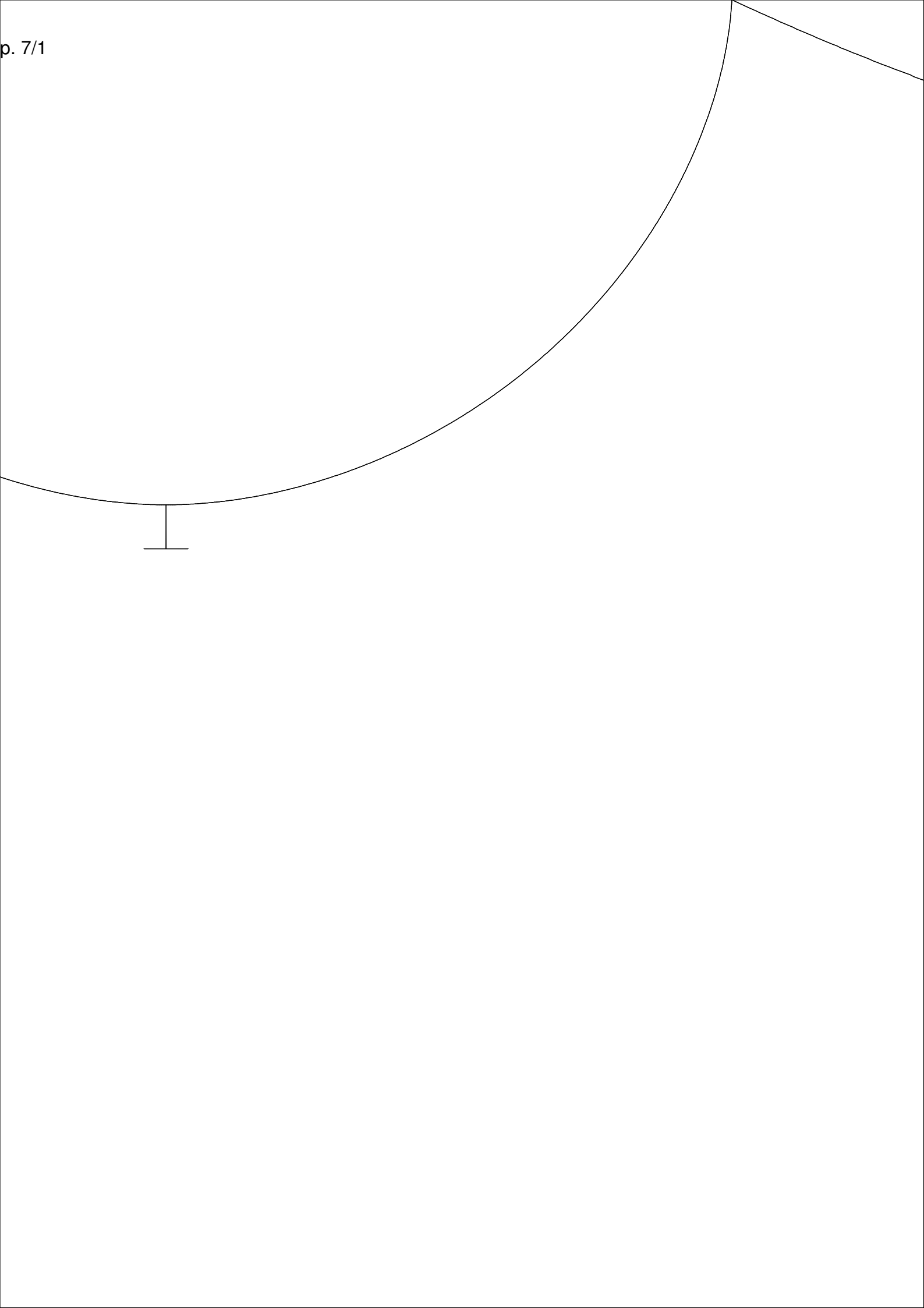
НКИ

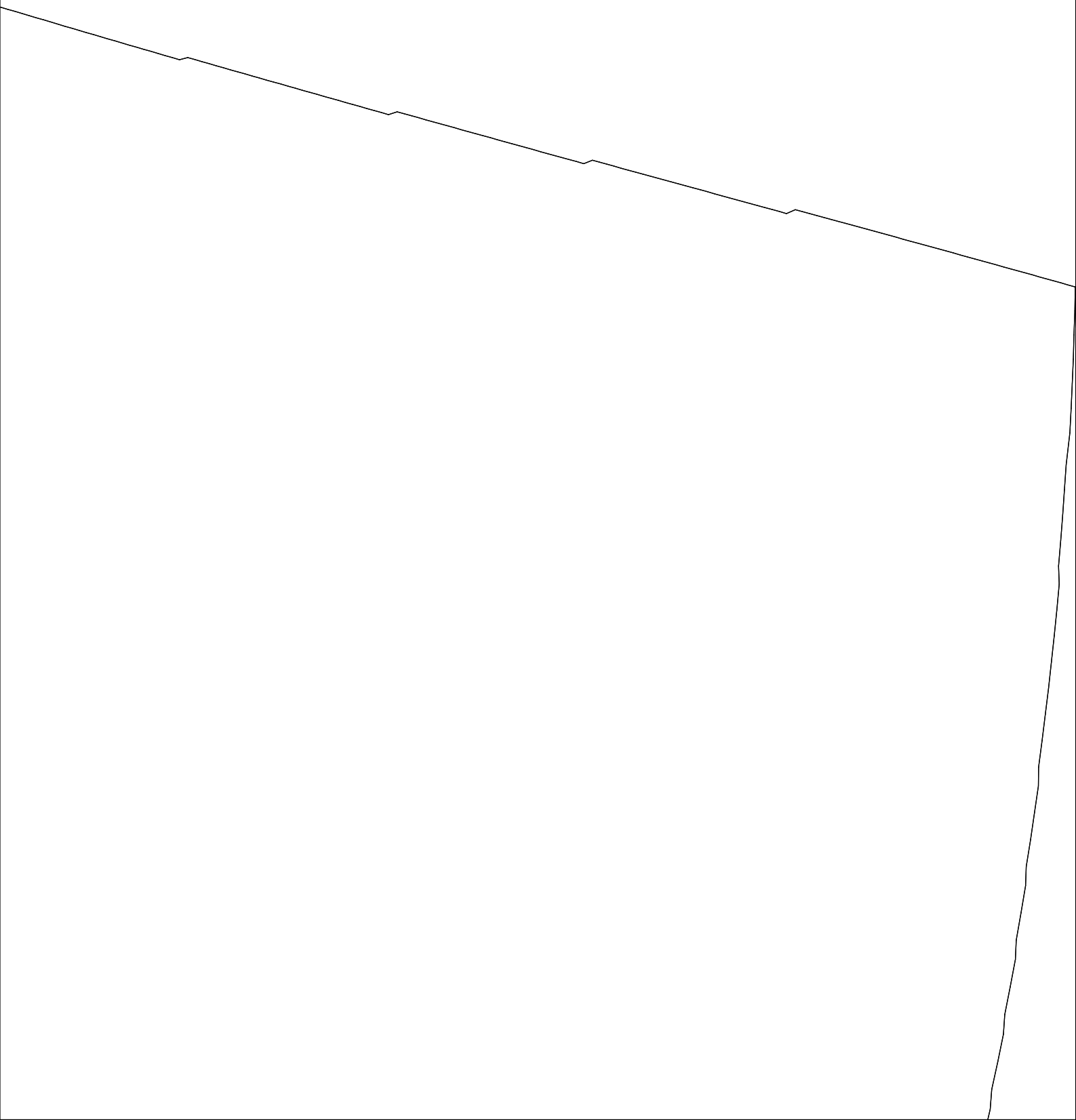
Кл. Дет. = (1, 0)

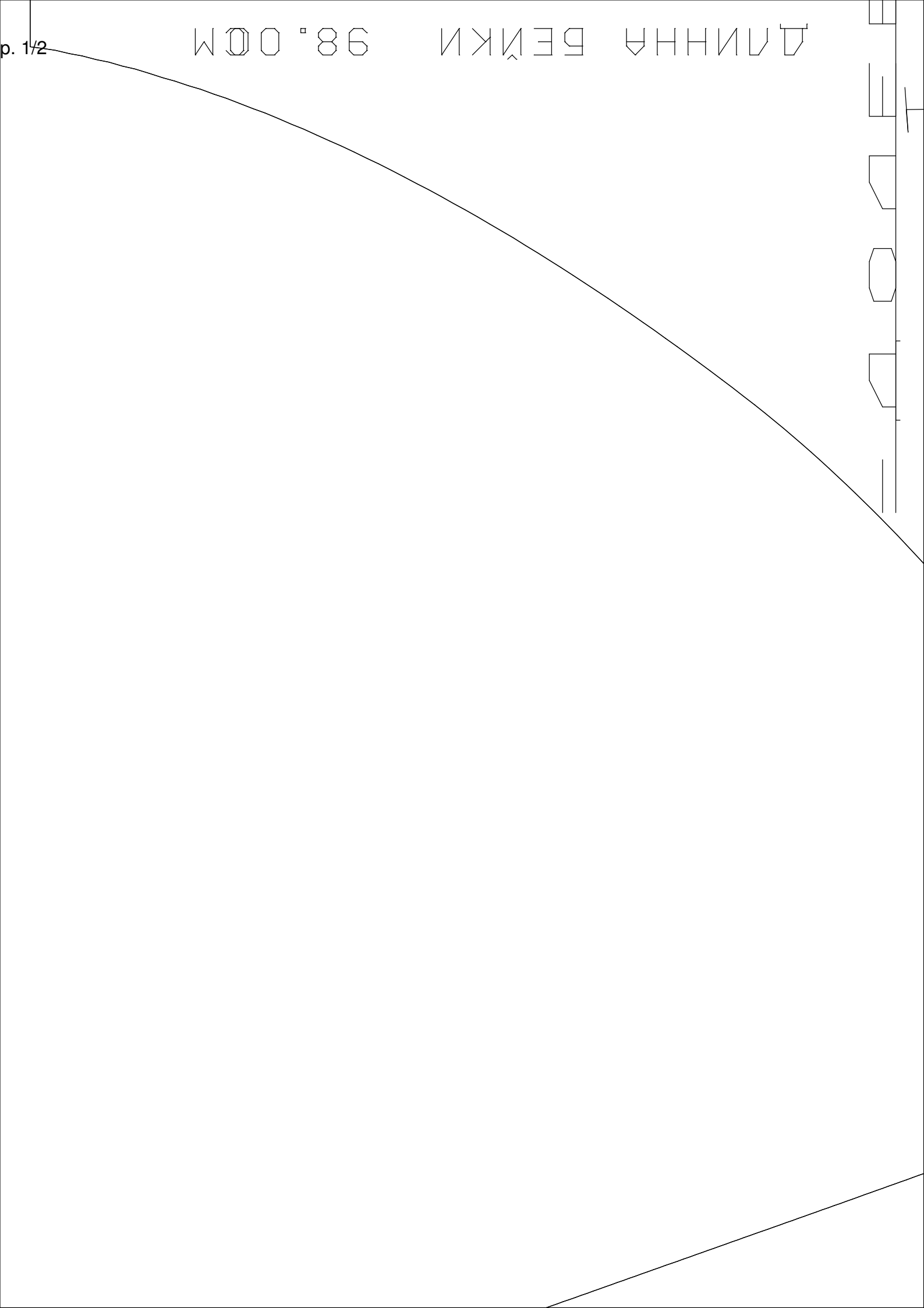






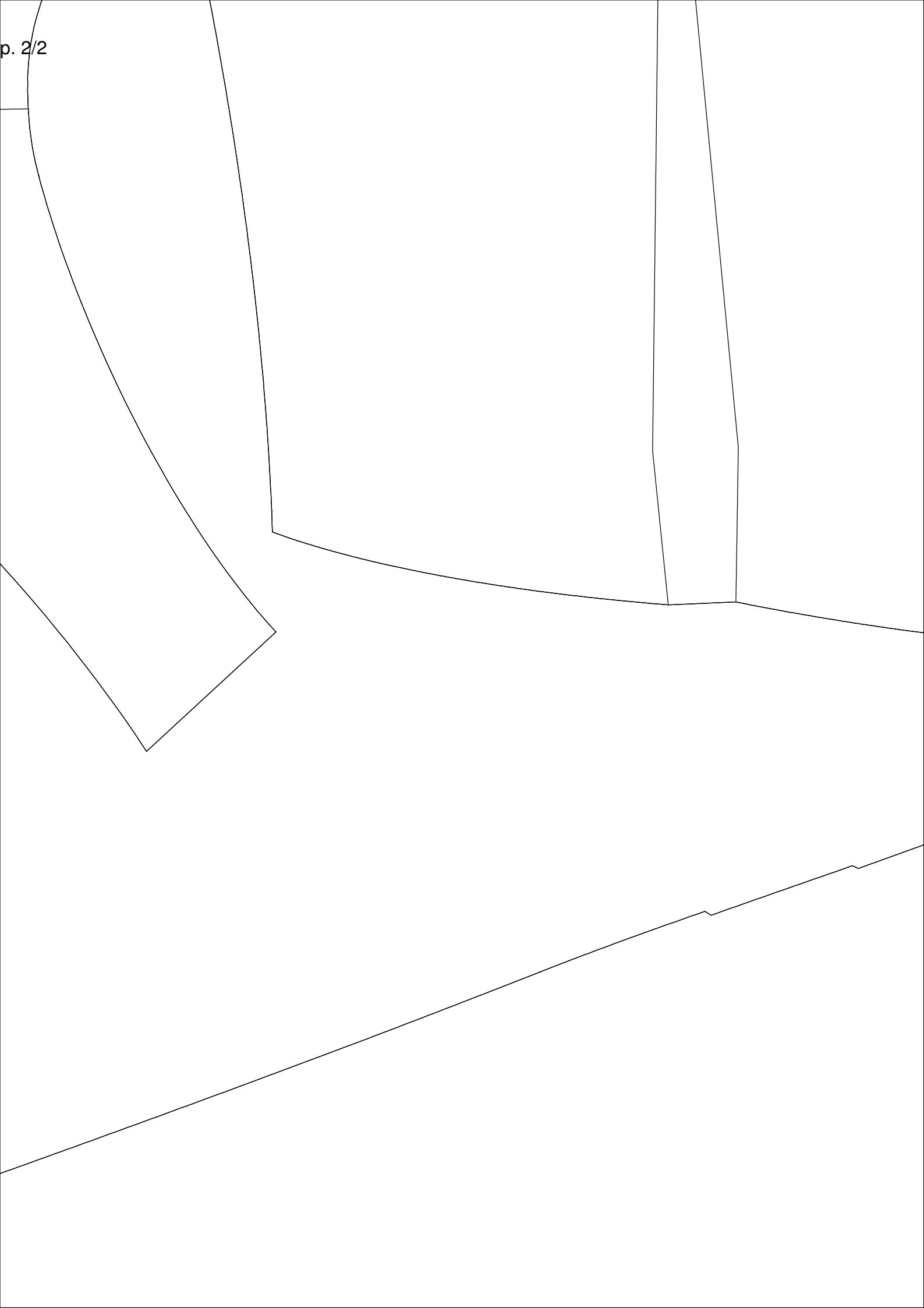


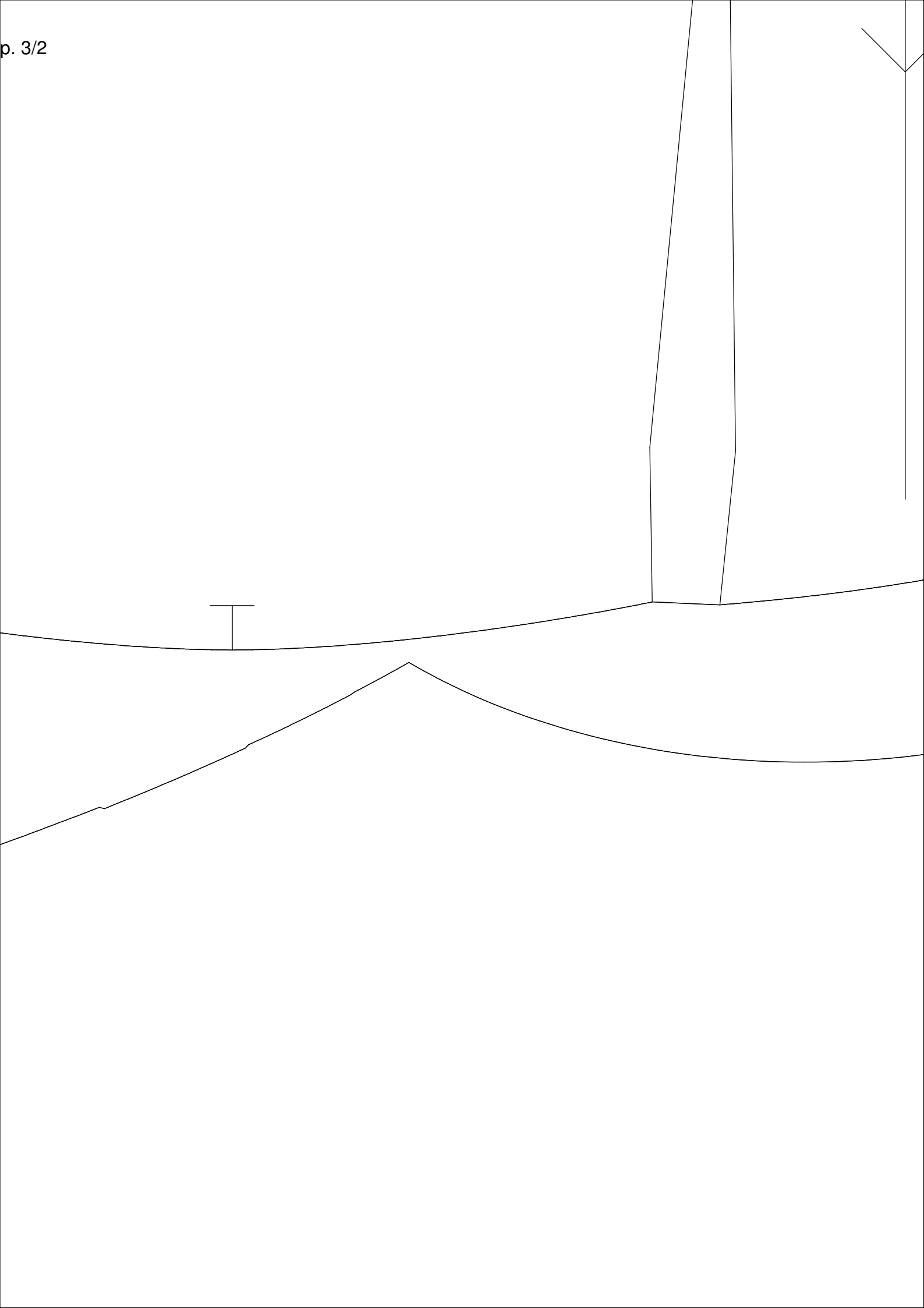


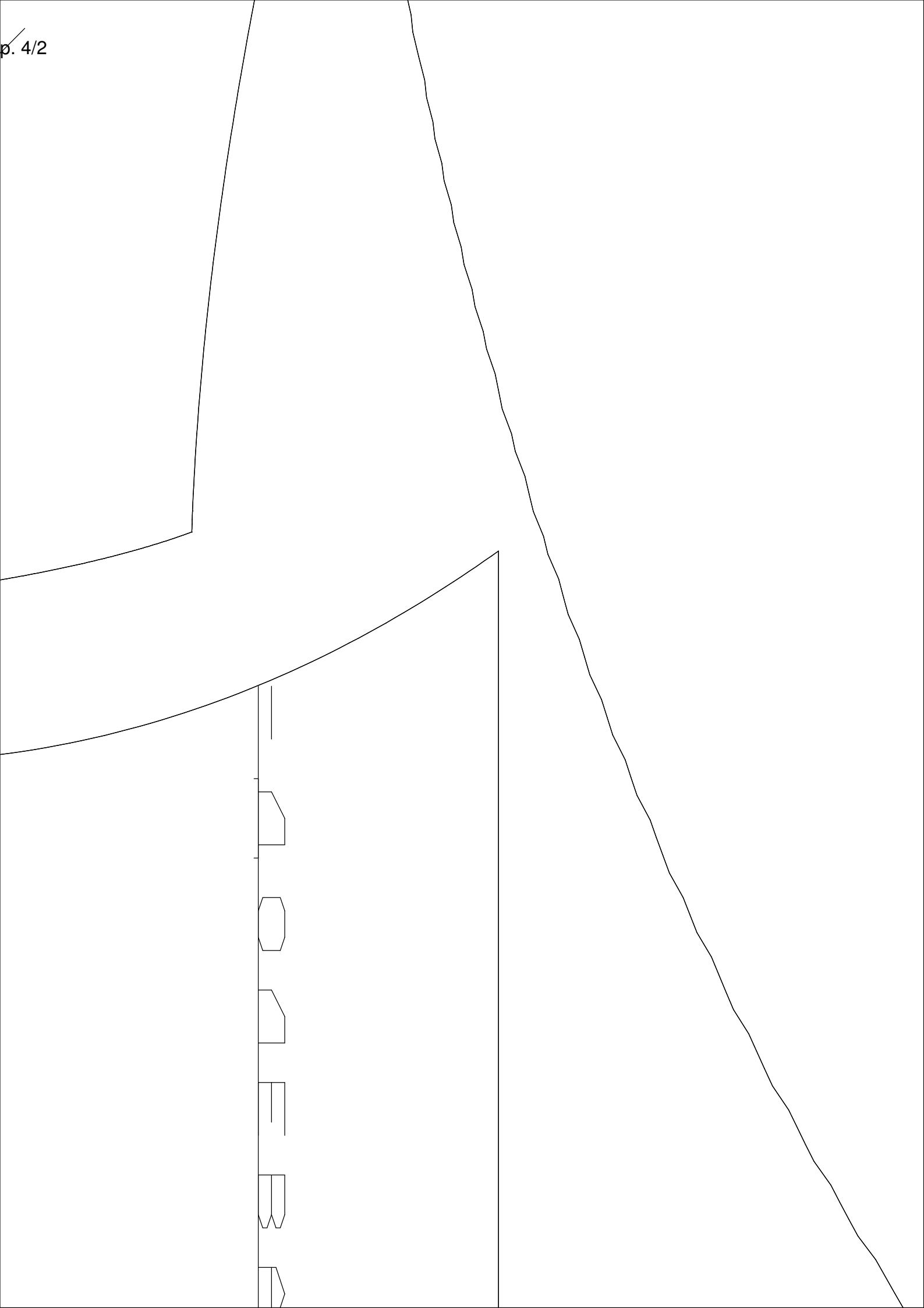


p. 1/2

ДЛЯНИНА БЕЖКИ 98.00M





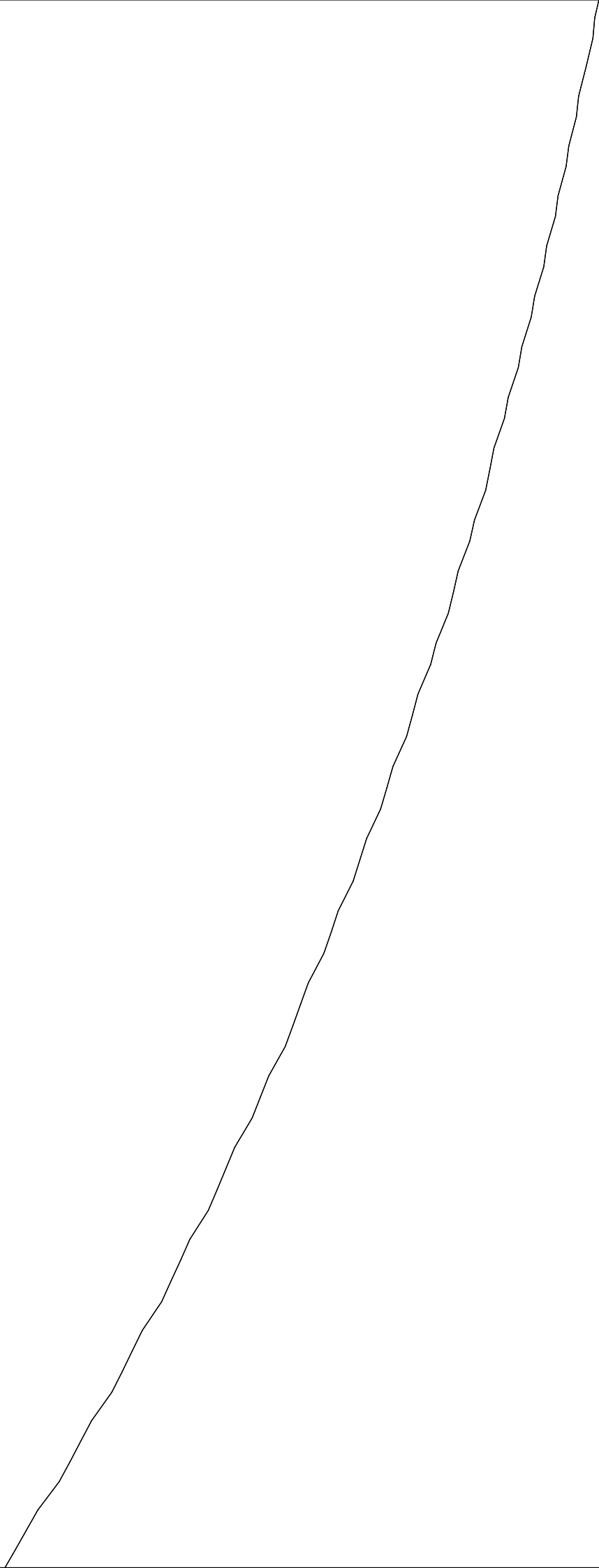


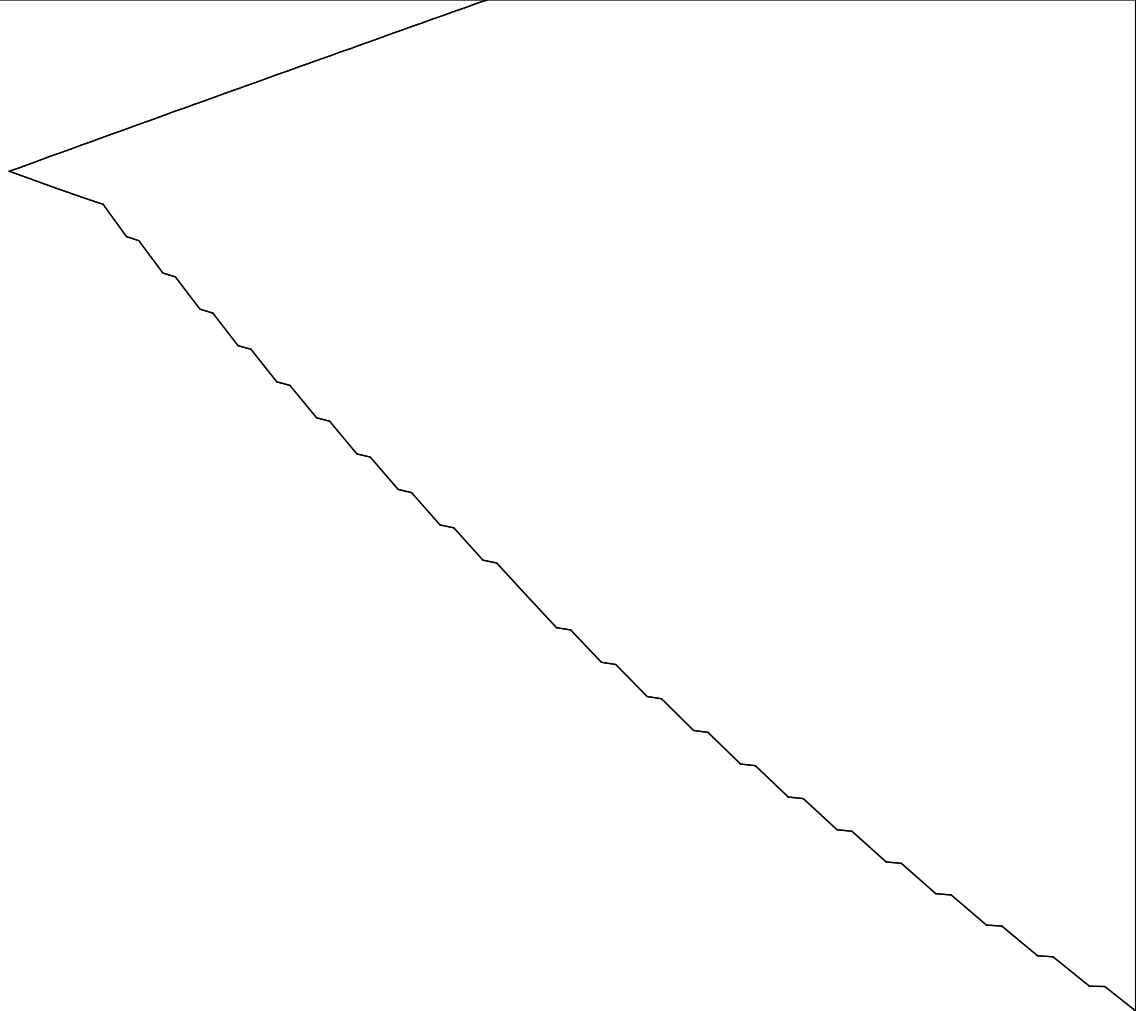
НИЖНЯЯ_ЧАСТЬ_СПИНКИ

Тип Полотна ВЕРХ, Кл.

Ж=168-84-66-90

$$\text{Det.} = (1, 0)$$

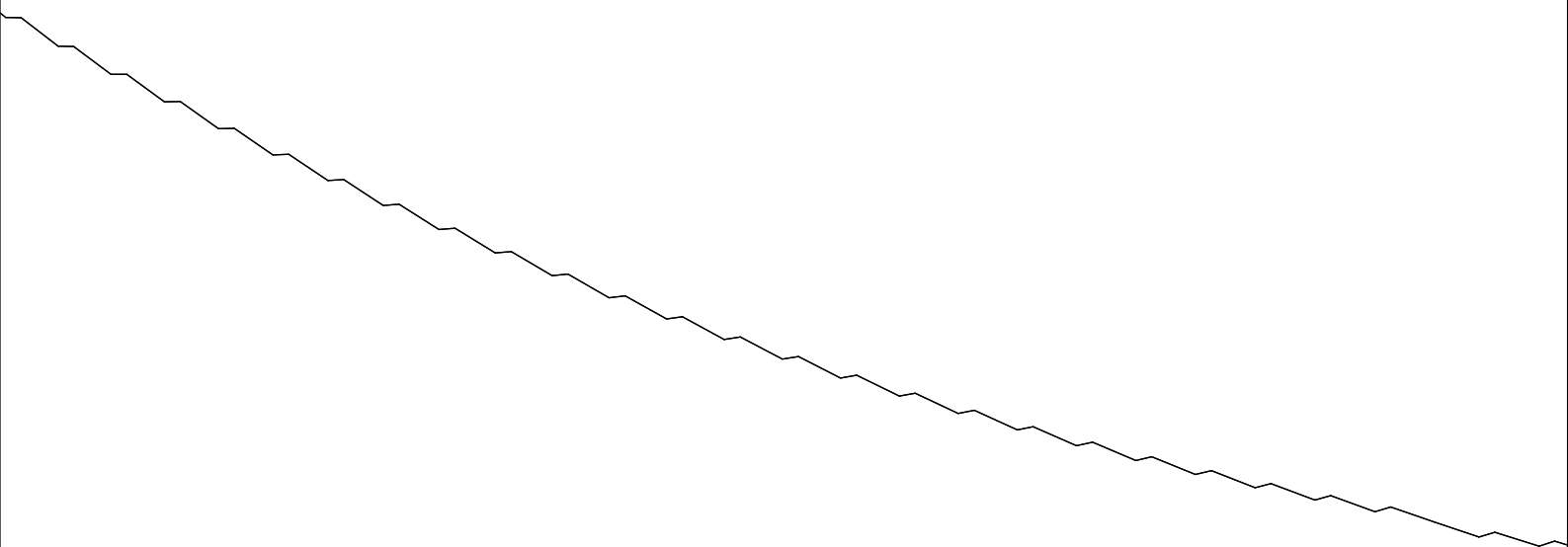




НИЖНЯЯ_ЧАСТ

Тип Полотна

Ж=168-84-66

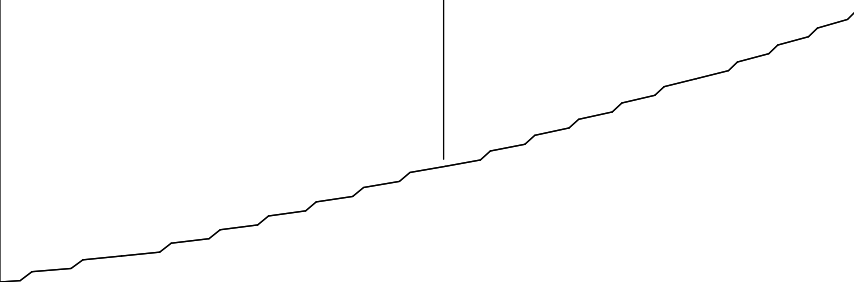
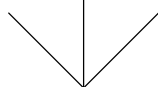
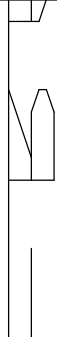


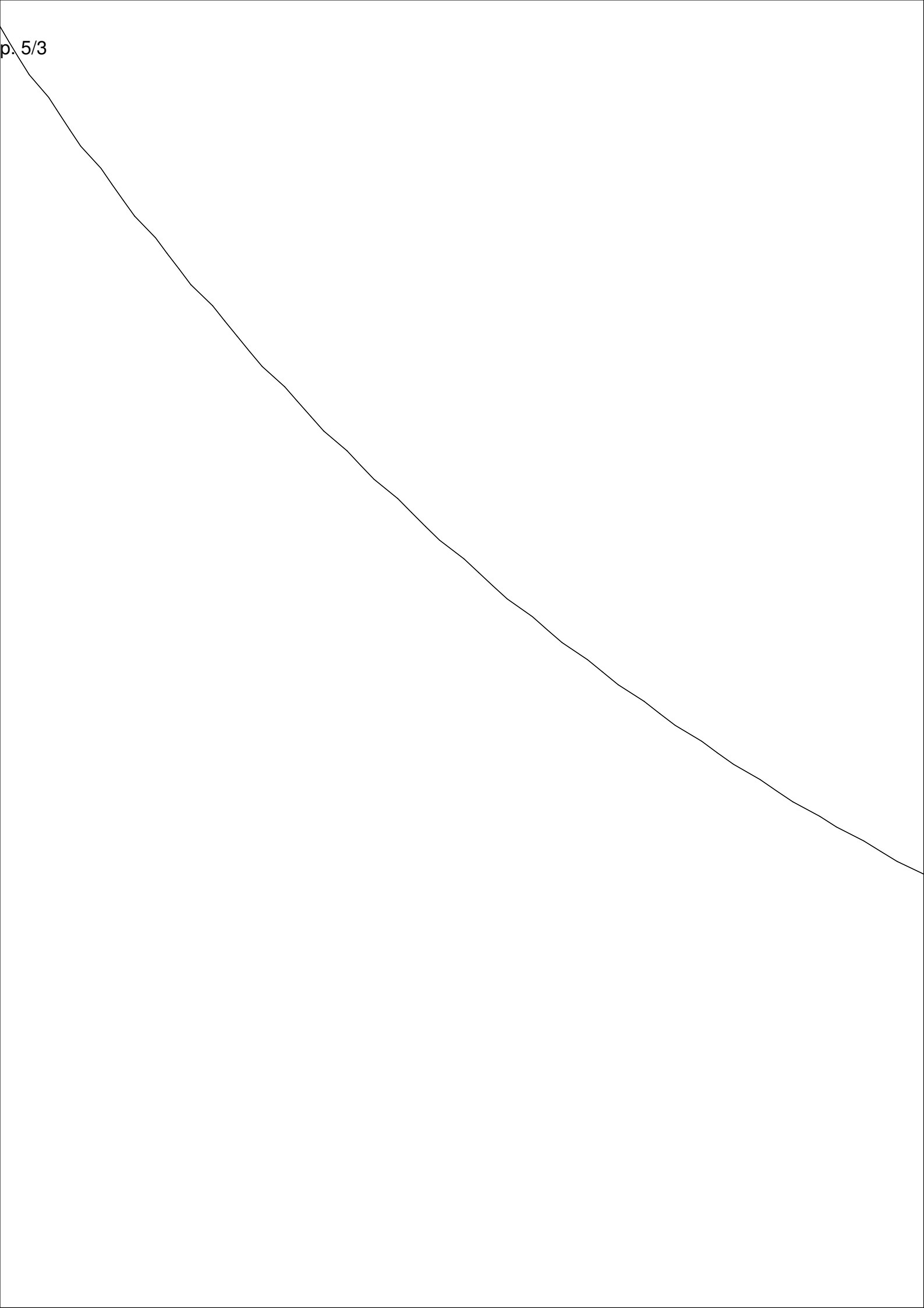
ь_ПОЛОЧКИ

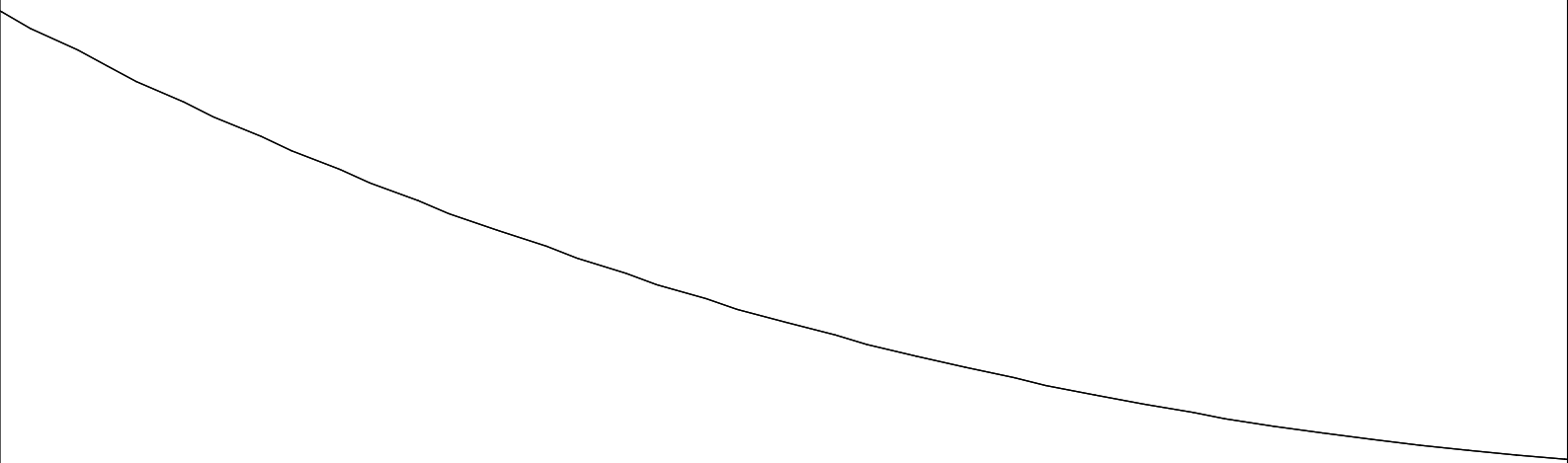
ВЕРХ, Кл. Дет. = (1, 1)

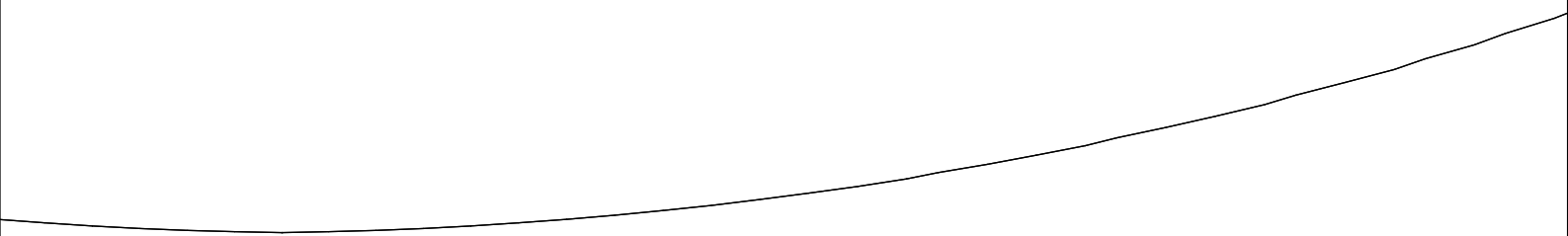
-90

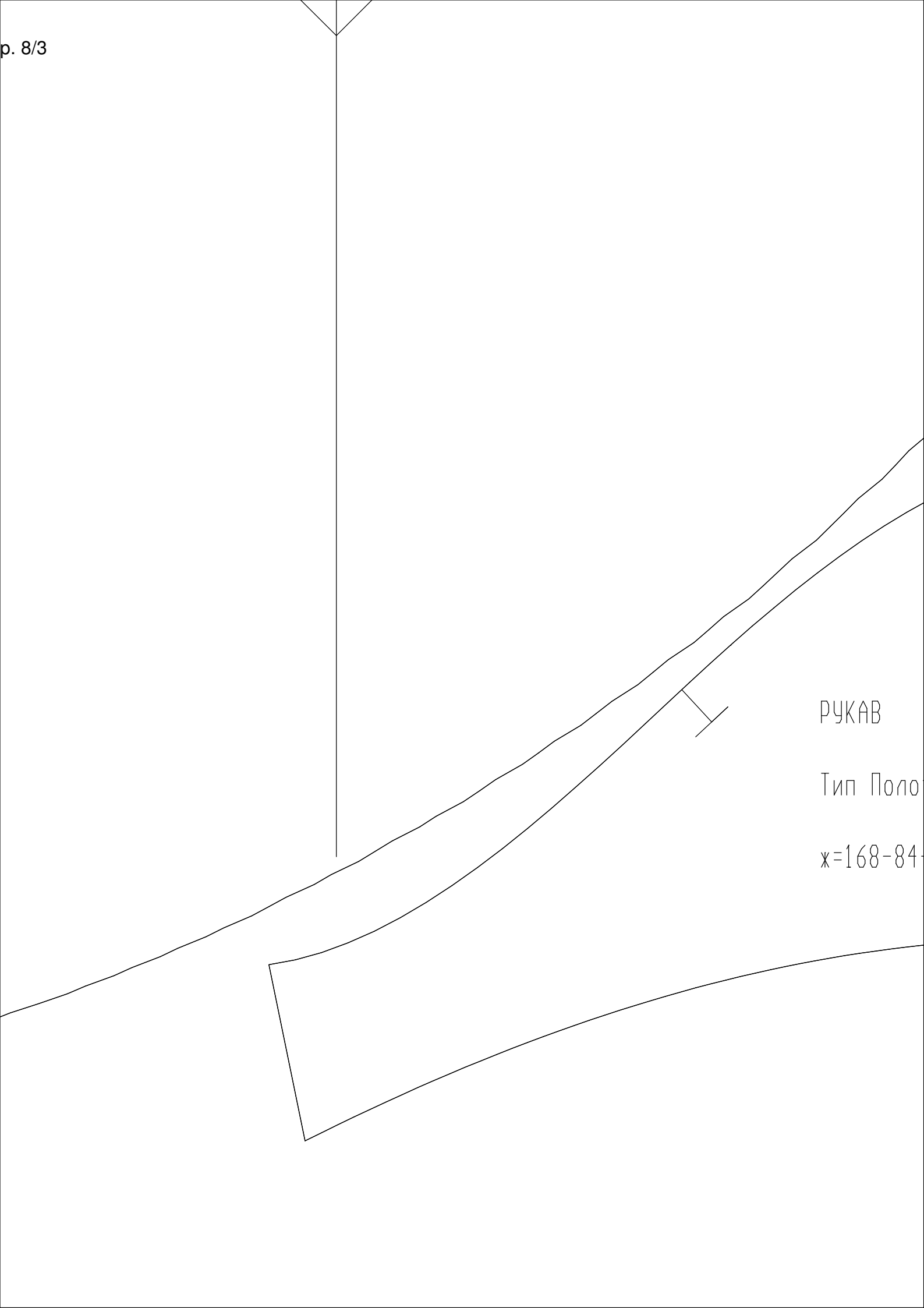








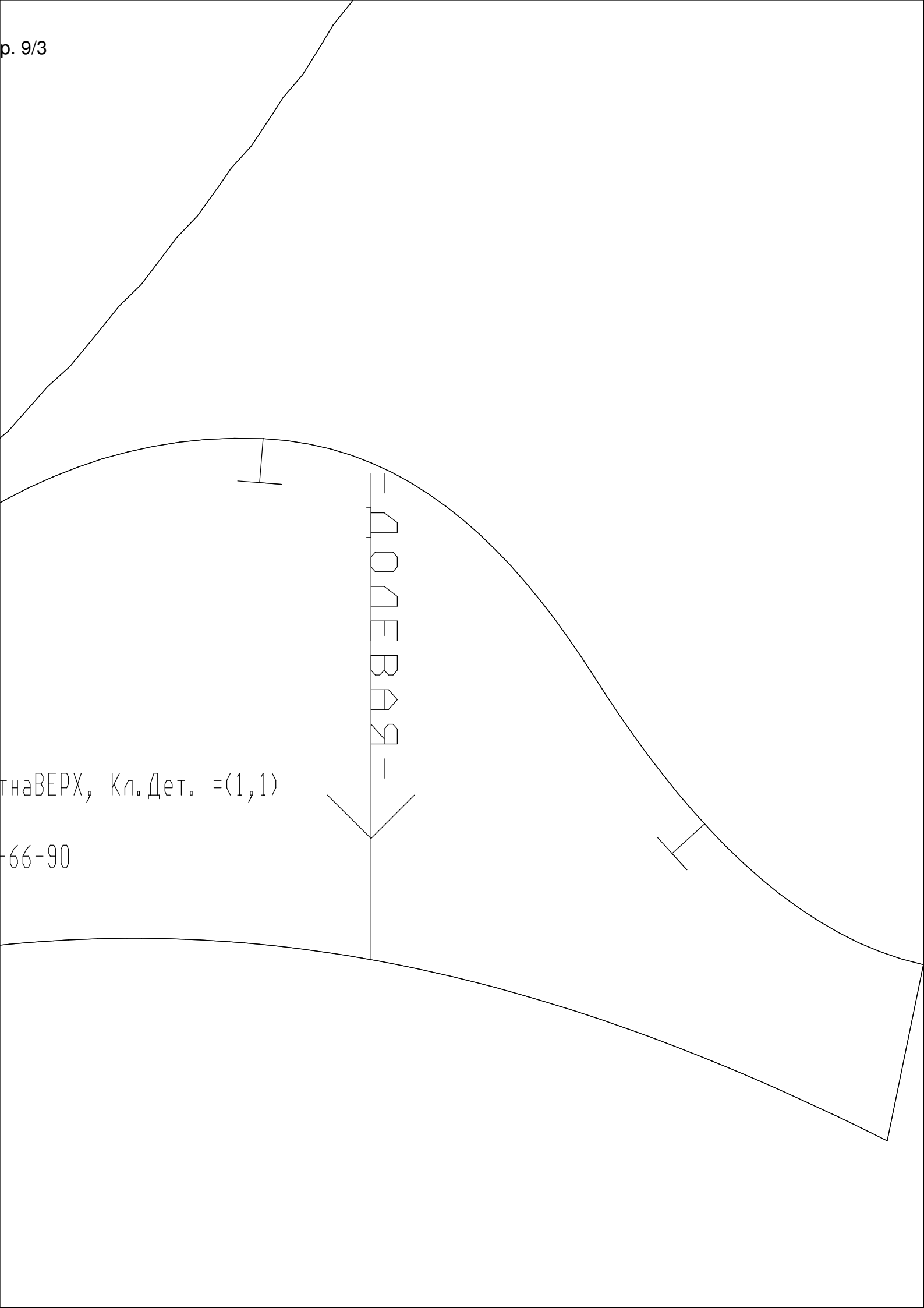




РУКАВ

Тип Поло

ж=168-84



на ВЕРХ, Кл. Дет. = (1,1)

66-90